

The Perfect Line. Every Time.

Achieve professional results with high performance paint, precision applied.



The Perfect Pairing

The complete road marking solution for airless applications



Proven Compatibility. Professional Results.

Prismo-Vernisol traffic paints have been rigorously tested on SAMOA airless road marking machines to ensure compatibility, reliability, and ease of use.

This guide outlines the optimal configurations to help you deliver seamless, long-lasting results from the very first application.

The best finish requires precision in both materials and machine settings.

- ✓ **Verified compatibility** between SAMOA machines and Prismo-Vernisol paints
- ✓ **Tested application settings**, nozzle sizes and pressure to eliminate guesswork
- ✓ **High-quality paint** for accurate results, consistent coverage, and strong adhesion

Achieve accurate, professional finishes with the right paint and machine combination.

1.

Choose the Right Paint

Deliver exceptional results with perfectly matched SAMOA machines and Prismo-Vernisol paints - tested for precision and performance.

2.

Use Recommended Settings

Achieve effortless, precise and consistent applications every time by following the optimal pressure and nozzle specifications.

3.

Maximise Efficiency

Remove guesswork, reduce downtime and improve productivity with a seamless paint and machine combination.



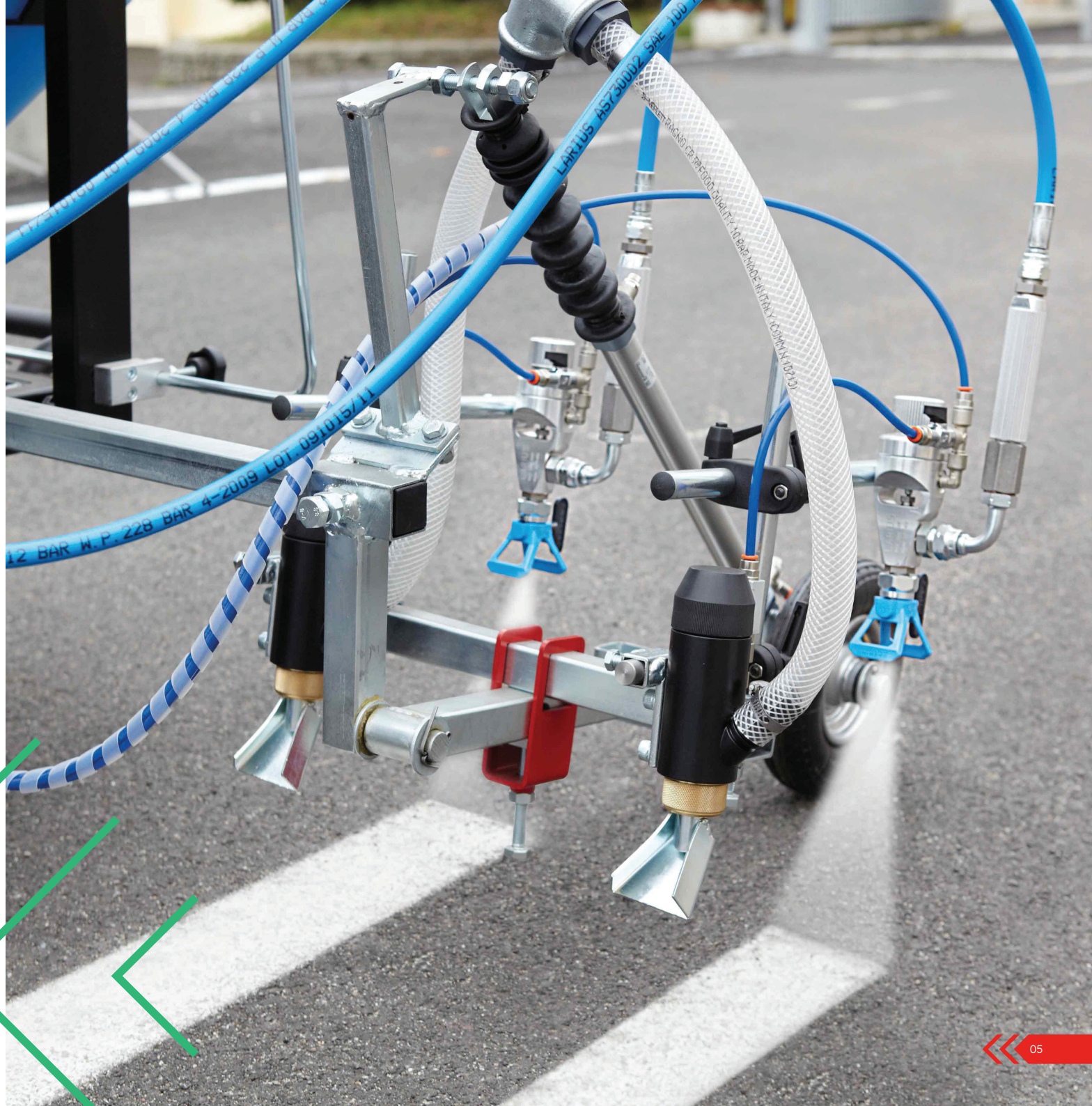


Precision Marking. Made Simple.

LARIUS, Samoa's subsidiary, has been making road marking easier, faster, and more reliable for over 50 years. Their airless spraying technology ensures clean, precise lines on roads, car parks, cycle lanes, and more – whether using a push-behind model or a self-propelled machine.

Built for contractors who need efficiency without compromise, SAMOA line marking equipment is designed to handle real-world conditions, with options for petrol-powered and battery-powered operation.

Whether you're already using SAMOA airless road marking machines or looking for a system that delivers consistent, professional results, these machines are built to perform.





The mark of enduring quality

Prismo: A Legacy of Road Marking Excellence

For nearly a century, Prismo has been setting the standard in road safety solutions. From pioneering the first reflective glass sphere in a traffic paint in 1938 to the invention of the Thormajoint system for bridge expansion in 1971, Prismo has built a reputation for quality and innovation that lasts.

With manufacturing sites across the UK, Italy, and South Africa, Prismo supplies road markings that stand up to heavy traffic, tough weather, and real-world use. From highways and walkways, to airfields and car parks, Prismo products are engineered to deliver long-lasting results.



Part of Prismo Global

Vernisol: Trusted Performance

Now part of Prismo Global, Vernisol has spent over 40 years developing and manufacturing high-quality road markings that are trusted across Italy and beyond.

With expertise in solvent and waterborne paints, MMA cold plastic, and specialist technologies, Vernisol has become the destination for durability and performance.

Get the best from your SAMOA line marking machine

Prismo-Vernisol paints have been rigorously tested with SAMOA airless line strippers to ensure a seamless application and professional results.

Every recommended setting is based on real-world testing, giving you a proven system that works reliably under all conditions.



SOLVENT BORNE PAINTS

Formulated to work flawlessly with airless technology, our high performance solvent borne paints deliver clean, sharp lines, and a fast application without sacrificing on quality.

Performance Approved on SAMOA airless road marking machines



Solvent Based Epoxy

Prismo Epoxyline®

A one-component, non-reflective epoxy-ester matt paint formulated for airports, ports, and high-pressure environments. Easy to apply using airless equipment, it delivers a hardwearing finish, and strong adhesion to asphalt and concrete. Prime problem concrete.

Key benefits:

- Fast-dry, single-pack application for a quick turnaround
- Outstanding wear resistance: >1000 cycles (ASTM D2486)
- Suitable for indoor and outdoor use
- Removable liner for quick and easy recycling
- Ideal for overspray with glass beads or antiskid media
- Available in multiple colours

Ideal for:



Solvent Based Acrylic

Spartitraffico Acrylic Airless

A one-component, non-reflective matt acrylic paint specifically developed for airless road marking machines. Perfect for high-volume applications, it delivers precise, cost-effective line markings quickly and efficiently to asphalt and primed concrete.

Key benefits:

- Fast drying for increased productivity
- Excellent flow and performance at high operating speeds
- Suitable for a wide range of temperatures
- Ideal for overspray with glass beads or antiskid media
- Available in a wide range of colours

Ideal for:



Solvent Based Acrylic

FS01 Aromatic Free

A one-component, non-reflective, aromatic-free matt acrylic paint. Quick to apply using airless technology, it flows and adheres rapidly to produce sharp, long-lasting line markings on asphalt and primed concrete.

Key benefits:

- High durability – includes products certified at AETEC and BAST
- Non-aromatic formulation – more eco-friendly
- Quick drying for rapid reopen and return to service
- Ideal for overspray with glass beads or antiskid media
- Available in multiple colours

Ideal for:



SOLVENT BORNE FLOORING PAINTS

Engineered for airless application, our solvent borne flooring paints offer smooth coverage, fast application, and lasting protection in demanding environments.



Performance Approved on SAMOA airless road marking machines

Solvent Based Epoxy

Epoline™

A two-component, non-reflective and aromatic-free epoxy paint with a matt finish. Suitable for airless application, it offers extreme durability on asphalt, concrete, stone and porphyry, even in high-salt environments such as ports.

Key benefits:

- Strong adhesion to a wide range of substrates with no need for priming
- Exceptional resistance to salt, chemicals and high-traffic
- Aromatic-free formulation – more eco-friendly
- Suitable for both indoor and outdoor applications
- Ideal for overspray with glass beads or antiskid media
- Available in multiple colours

Ideal for:



Heavy-traffic Areas



Distribution Facilities



Industrial Flooring



Solvent Based Acrylic

Lucido™

A one-component, non-reflective acrylic paint designed for multiple applications, from road marking to interior and exterior flooring. Suitable for airless spray, it delivers a durable, matt finish with excellent surface hardness to both asphalt and primed concrete.

Key benefits:

- Fast drying for a quick turnaround and minimal downtime
- Excellent durability under heavy traffic and forklift trucks
- Suitable for both indoor and outdoor applications
- Ideal for overspray with glass beads or antiskid media
- Available in a wide range of colours

Ideal for:



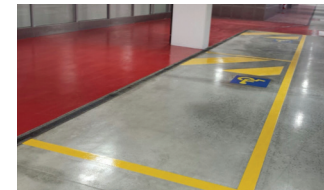
Roads



Multi-storey Car Parks



Industrial Flooring



Solvent Based Polyurethane

Polisol™

A two-component, non-reflective polyurethane paint for indoor and outdoor concrete flooring. Ideal for industrial environments, car parks, and highly trafficked areas, it offers easy airless application and a strong semi-gloss finish.

Key benefits:

- Purpose-built for concrete floors - no priming required
- High resistance to forklifts and heavy machinery
- Withstands exposure from chemicals, oils and grease
- Ideal for cold climates and fluctuating temperatures
- Suitable for indoor and outdoor surfaces
- Available in multiple colours

Ideal for:



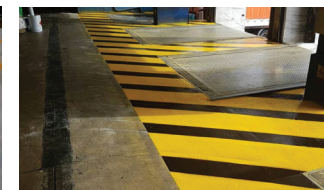
Heavy-traffic Areas



Distribution Facilities



Industrial Flooring



WATER BORNE PAINTS

Our advanced waterborne paints offer environmental and applicator benefits without compromising performance. Designed for airless application, they ensure fast, precise coverage and long-lasting results.

Performance Approved on SAMOA airless road marking machines



Water Based Acrylic

X7 Airfield TT-P Type II

A one-component, non-reflective matt acrylic paint engineered for airfields and certified to TT-P Type II. Designed for airless spray, it delivers rapid application with precise lines, excellent washability, and high scrub resistance on asphalt and concrete.

Key benefits:

- TT-P-1952F Type II certified for use in adverse conditions
- Highly durable—withstands cleaning and wear from aircraft traffic
- Quick drying formula for a fast reopen and return to service
- Strong substrate adhesion to asphalt and concrete without primer
- Bright, high-reflectance white (89%) for enhanced visibility
- Available in white and yellow

Ideal for:



Water Based Acrylic

AquaVia™

A one-component, non-reflective matt acrylic paint for airless line marking on asphalt and concrete. Available in a wide range of grades and international certifications to suit every specification. Prime problem concrete.

Key benefits:

- Range includes CE marked product and certifications from AETEC, BASt and ASCQUER
- Choice of standard, premium and cold climate grades
- High application speed for faster project completion
- Ideal for overspray with glass beads or antiskid media
- Available in white, yellow and standard traffic colours

Ideal for:



“**THE RIGHT SETUP,
FIRST TIME,
EVERY TIME**”



ADVANCED MARKING SOLUTIONS

Increase your productivity on the road

SAMOA professional road marking machines with airless technology deliver advanced marking and increased productivity.

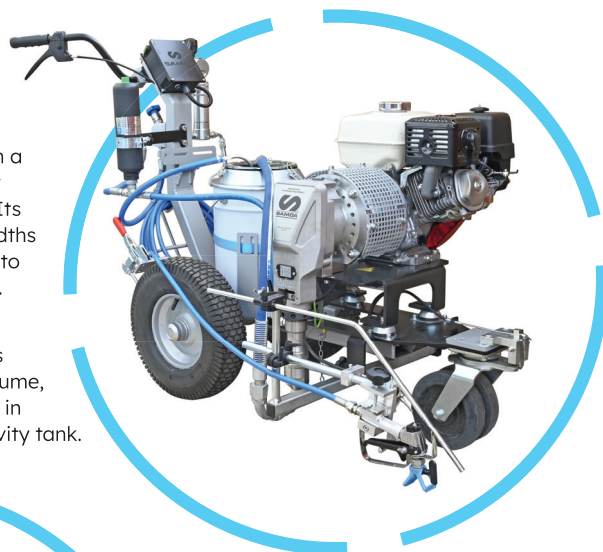
Suitable for highways, airfields, industrial facilities, car parks, bike lanes, pedestrian crossings and more, SAMOA airless line strippers are built for precision, efficiency and durability.

- Over spray minimised
- Vibration reduction
- Paint dries quickly
- Easy operation and maintenance

Zeus Liner

A high-pressure, manual push machine with a piston pump, the Zeus Liner is designed for both continuous and dashed line marking. Its adjustable settings allow for precise line widths from 5-30 cm, with the ability to extend up to 28 cm using a 60° nozzle at a 29 cm height.

The Zeus Liner is engineered to handle denser materials and can operate two guns simultaneously, making it ideal for high-volume, precision work. The Zeus model is available in different versions: 23 l paint can or 50 l gravity tank.



Dali Liner

The Dali Liner is available in manual push version with 23 l paint can or 50 l gravity-fed tank, ensuring steady, even coverage—reducing downtime and improving productivity on larger projects. It delivers accurate, uniform application across various surfaces.

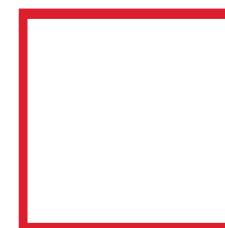
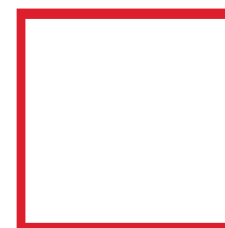


Prismo-Vernisol Solventborne Paints

Paint	Machine	Diluted	Nozzle Size	Airless Pump Pressure	Line Width
Spartitraffico Acrylic Airless	Zeus / Dali	1%	SFC 15-40	200 BAR/ 150 BAR	10/12 cm
FS01 Aromatic Free	Zeus / Dali	No	SFC 15-40	220 BAR	10/12 cm
Epoxyline	Zeus / Dali	No	SFC 15-40	220 BAR	10/12 cm
Lucido	Zeus / Dali	4.5%	SFC 15-40	220 BAR	10/12 cm
Epoline	Zeus / Dali	2%	SFC 15-40	220 BAR	10/12 cm
Polisol	Zeus / Dali	No	SFC 15-40	220 BAR	10/12 cm

Prismo-Vernisol Waterborne Paints

Prismo Paint	Machine	Diluted	Nozzle Size	Airless Pump Pressure	Line Width
AquaVia	Zeus / Dali	No	SFC 15-17/40	220 BAR	10/12 cm
AquaVia Ulto	Zeus / Dali	No	SFC 15-17/40	220 BAR	10/12 cm
AquaVia Ulto 150	Zeus / Dali	No	SFC 13-40	200 BAR	10/12 cm
X7 Airfield Paint TT-P Type II	Zeus / Dali	No	SFC 15-17/40	220 BAR	10/12 cm



Every mark matters with SAMOA & Prismo



Larius S.r.l
Via Antonio Stoppani 21
23801 Calolziocorte (LC) - Italy
Phone +39 0341 621152
Fax +39 0341 621242
larius@larius.com
www.larius.com

SAMOA Industrial is an industrial company that manufactures pumps, systems, and solutions for complex fluid handling. As an integrated manufacturer, SAMOA designs, develops, manufactures, and distributes its products with great focus on quality and innovation.

SAMOA Products are used for transferring, dispensing, applying, measuring and controlling all type fluids in multiple applications within several industries. SAMOA Industrial has 3 different product lines: Lubrication Equipment, Process Pumps, and Applied Industrial Fluid Solutions.

SAMOA, since its foundation, has embraced an international vision that has led to geographic diversification, allowing the company to establish a presence in more than 110 countries through its own subsidiaries and specialised distributors.



The mark of enduring quality



Part of Prismo Global

Established in 1935, Prismo is a world-leading manufacturer and supplier of road markings and traffic safety solutions with a wide range of high-performance, innovative products. Vernisol brings over 40 years of specialist expertise in advanced traffic paint and MMA technologies, delivering long-lasting coatings tailored for modern infrastructure needs. Together, Prismo and Vernisol unite over 130 years of combined experience, offering a comprehensive portfolio of trusted road safety solutions built on proven performance, innovation, and enduring quality.

UK

Prismo Road Markings Limited
+44 (0) 1257 225 100
info@prismoglobal.com

Headquarters:

5 Drumhead Road,
Chorley North Industrial Park,
Chorley, Lancashire, PR6 7BX
United Kingdom

ITALY

Vernisol S.r.l.

Codogno:

Via Sante Giuseppe Bertini 1
Codogno (LO), 26845, Italy
+39 0377 621250
vernisolinfo@prismoglobal.com

Leini:

Via Beppe Fenoglio
Leini (TO), 10040, Italy
+39 0377 621270
vernisol torino@prismoglobal.com

SOUTH AFRICA

Prismo South Africa (PTY) Ltd
+27 (0) 11 473 1057
RSAinfo@prismoglobal.com

Johannesburg:

Unit 7, Commercial Park,
Aintree Avenue, Northriding,
Randburg, Johannesburg, 2162

Cape Town:

Unit 1 Fifth Street Park,
6 Fifth Street, Montague Gardens,
Milnerton, Cape Town 7441

www.prismoglobal.com