



The mark of enduring quality

**Redefining  
the Road Ahead.  
For marks that matter.**

We all want to make our mark.  
To make a difference.  
To do something special.  
This is what Prismo do  
at ground level.

We create ground marking  
solutions that help people on  
the move. Keeping them safe.  
Improving their experience.  
In all types of environments.

For nearly a century, Prismo® has made its mark,  
from the first reflective glass sphere in 1938 to the  
invention of the Thormajoint® system for bridge  
expansion in 1971.

As an innovator and leader in road safety, we're  
committed to helping you make every journey  
safer, every space more defined, and every project  
more durable.

We're proudly independent, and that means we  
answer only to you. We stand for quality, expertise  
and support, but most importantly trust.

Whether you're creating safer highways, reliable  
infrastructure, or vibrant public spaces, Prismo® is  
the partner you can trust to deliver.

**Because every mark matters.**

## Our Values

### Quality

- **Quality** comes above everything else.
- Superior **durability** and **usability** are our hallmarks.

### Support

- Building **relationships** is key to our success.
- We are focused on your **satisfaction**.

### Expertise

- We **solve problems** and provide **brilliant advice**.
- Informed by decades of **experience**.

### Trust

- Operating **sustainably** with **honesty** and **integrity**.
- We are an **independent business** that cares.

## Experience matters

We manufacture our own products and take huge pride in ensuring they meet the diverse needs of our customers. Our ground marking solutions have been proven in the real world over decades and across continents.

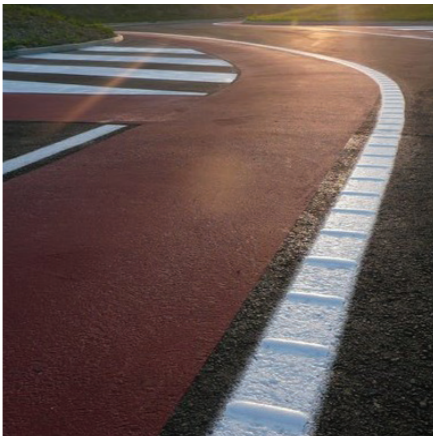
From roads, airfields and car parks to cycle lanes, warehouses and playgrounds, our products simplify installation, reduce maintenance, and ensure enduring performance across a range of challenging conditions.

## Sustainability matters

Our UK headquarters and advanced manufacturing facility operate entirely on renewable energy, and are ISO 14001 certified, reflecting our commitment to sustainability.

Our product range incorporates 91% bio-based resins, up to 45% recycled materials, and up to 60% repurposed waste from other industries. Designed for durability, our solutions also reduce the frequency of reapplication, helping to keep carbon emissions low.

Our products are crafted not only for high performance but also to reduce environmental impact.



Prismo®

Vernisol™

# Hot Applied Thermoplastics

Hard-wearing and fast-setting, hot applied thermoplastic is ideal for heavily trafficked roads. It hardens within approximately 60 seconds of application and can be applied as a flat or profiled line.

Prismo® operates the world’s largest thermoplastic plant, producing an extensive range of products that cater for all levels of trafficking and climate. With decades of proven performance and numerous certifications across multiple markets, we provide solutions to meet every specification.



**Lifeline®**  
A highly reflective white thermoplastic that can be applied by screed, extrusion or spray. It offers multiple retroreflectivity and performance levels, with all grades certified on UK road trails.



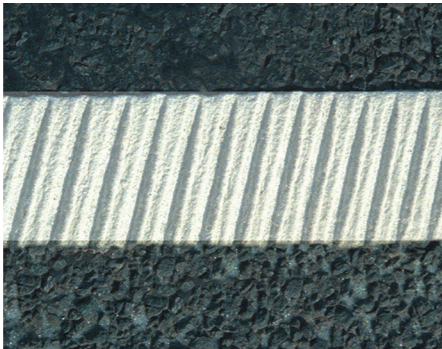
**Crystalex®**  
A reflectorised thermoplastic in white or yellow that can be applied by screed or extrusion. Available in grades that are certified internationally, it is ideal for highways worldwide.



**Crystalex® Moisture Proof**  
A reflectorised thermoplastic in white, designed for moist surfaces. Nordic certified, it extends the season and reduces weather delays. Applied by screed or extrusion.



**Vibraline®**  
The original profiled marking system. Vibraline® provides visual and tactile feedback, ideal for edge lines and lane departure warnings. Certified for highway use, it is ideal for safety-critical areas and adverse weather.



**Rainline®**  
A profiled thermoplastic that maintains retroreflectivity in rainfall. Certified for highways, its embossed structure maximises visibility. Available in white, it is applied by extrusion or screed and immediately embossed.



**Crystalex® Multidot**  
Featuring Multidot technology that maximises light return for exceptional wet night visibility. Certified for highways, it is ideal for high-traffic, nighttime areas. Available in white, it is applied by specialist extrusion machinery.



**Guidemaster®**  
A non-reflectorised durable thermoplastic in white, yellow, deep cream, primrose, and a neutral base for custom colours. Ideal for high-traffic areas where there is Class 1 street lighting. Applied by screed or extrusion.



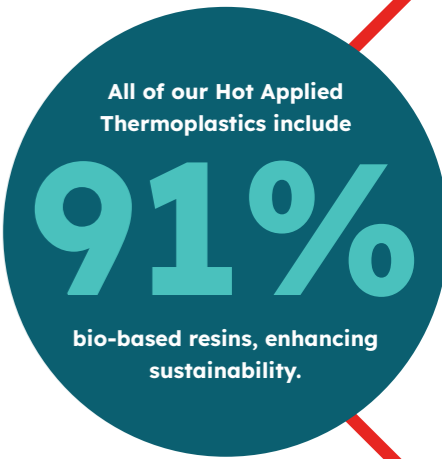
**Guidemaster® UrbanGrip™**  
Non-reflectorised thermoplastic with enhanced skid-resistance. Available in white and blue, it is ideal for pedestrian crossings and bike lanes in busy urban settings. Applied by screed or extrusion.



**Sprayplastic®**  
A spray-applied thermoplastic in white and yellow, with reflective and non-reflective options. Suitable for warmer climates, it is designed for high-volume marking. Certified for highways and applied using specialist spray technology.



**Sunline™**  
A reflectorised thermoplastic offering a cost-effective solution for tropical climates. Available in white and yellow, and applied by screed or spray, its high softening point maintains shape and visibility in hot temperatures.



**Duraflect™**  
A highly reflectorised thermoplastic with a 4-year warranty, offering excellent retroreflectivity and wet night visibility. Ideal for highways and city roads, it delivers outstanding durability and wear resistance. BAST certified, its long lifespan reduces maintenance needs, saving costs and lowering carbon emissions. Applied by extrusion.



**Durabahn™**  
A reflective multipolymer thermoplastic with superior abrasion and impact resistance, ideal for heavily trafficked roads. Its durability is similar to MMA and Epoxy but it is applied using standard extrusion machinery. Independently tested in Bavaria in a real life setting, it delivers long lasting markings backed by a 5-year warranty.

# Preformed Thermoplastics

Pre-cut and easy to apply by propane torch, preformed thermoplastics are ideal for precise markings and quick installations.

Engineered for durability, usability, colour retention, and grip, Thermaline® offers market-leading preformed markings for highways, airfields, car parks, crossings, playgrounds, urban spaces and more.



## Thermaline® Regulatory

Thermaline® Regulatory delivers excellent retroreflectivity, skid resistance, and durability for heavily trafficked areas. The range includes delineation markings, standard warning, prohibition, and advisory symbols in various sizes for highways, local roads, and cycle lanes, improving guidance and safety.



## Thermaline® Car Park

Thermaline® Car Park provides effective solutions for car park markings and EV bays, delivering high performance with excellent traction to reduce slipping risks. Standard symbols are available, with custom options and colours for logos or other elements to align with branding.



## Thermaline® Decorative

Thermaline® Decorative adds eye-catching and slip-resistant designs to playgrounds and public spaces for a durable, aesthetically pleasing look. The range features standard and customised designs in a wide variety of colours. From classics like hopscotch and snakes and ladders to creative custom patterns. We also specialise in bespoke designs, including logos for schools, clubs, and businesses, with additional colour options available upon request.



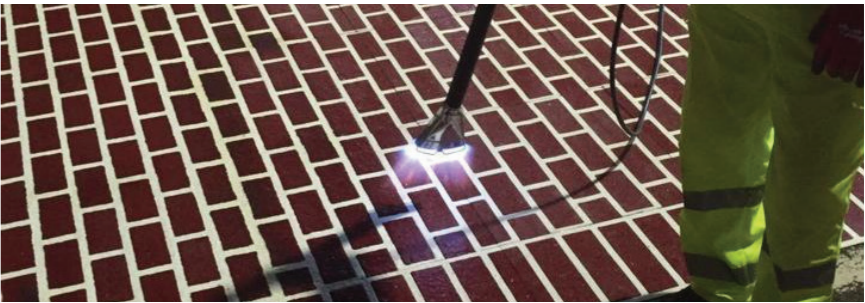
## Bendyline™

A new versatile solution that allows you to create unique designs. Highly flexible, it easily bends and adapts to any shape. Ideal for play areas, its non-slip formula ensures safety, while vivid, durable colours bring vibrancy.



## Urban Patterns™

A range of anti-skid preformed thermoplastic sheets that mimic traditional pavers and stones without the high cost, hassle, maintenance and safety concerns of the real material. The pattern and colour combinations of the sheets allow designers to create attractive pathways whilst preserving the charm of urban landscapes.



Our Preformed Thermoplastic contains up to

# 45%

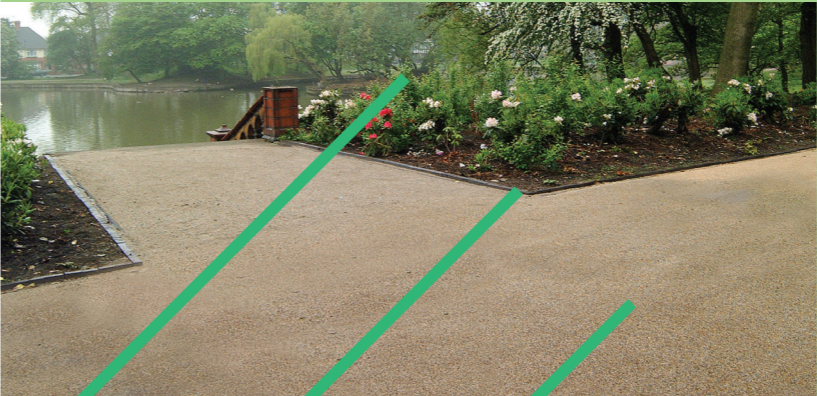
recycled materials

# Decorative Surfacing

Decorative surfacing transforms urban environments into beautiful landscapes that are practical and long-lasting.

## Stonegrip®

In use for over 20 years, Stonegrip® is a high-performance, decorative surface treatment for parks, gardens, urban regeneration and town centre enhancements. It features permanently resin bonded natural aggregate, offering exceptional durability, low maintenance, and non-slip safety without loose stones.



# High Friction Surfacing

High friction surfacing treatments increase skid-resistance and enhance safety across a wide range of applications. Prismo® offers both cold and hot applied solutions in a variety of grades to suit different climates and specifications.

## Cold Applied

Cold applied two-component systems for asphalt and concrete substrates.



### Prismogrip™

A BBA/HAPAS Type I certified MMA-based high friction surface treatment, for use on highways and hazardous zones like bends, gradients and junctions. It uses a liquid, solvent-free MMA binder with calcined bauxite to create a highly durable, skid-resistant surface (5mm thick). Available in Buff and Dark with other colours available on request, it delivers a skid resistance of ≥65.

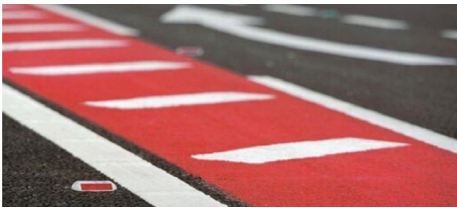
## Hot Applied

Hot applied by screed onto asphalt and pre-primed concrete substrates.



### Zebraflex®

A BBA/HAPAS Type I certified thermoplastic high friction surface treatment, for use on highways and critical areas. With 100% high PSV calcined bauxite, it provides a robust, high friction skid resistant surface (5mm thick). Available in Buff, Dark, Red and Green, it delivers a skid resistance of ≥70.



### Textureflex®

A thermoplastic surface treatment for traffic calming and delineation in medium to high-traffic areas. With high PSV aggregates, it creates a durable skid resistant layer (3-5mm thick). Available in red, and a base that can be tinted to green, black or blue, it delivers a skid resistance of ≥65.



### Cycletrack™

A thermoplastic surface treatment for cycle lanes and delineation in light-trafficked areas. Incorporating high PSV aggregates, it forms a well-textured, skid resistant layer (2-3mm thick). Available in red and green, it delivers a skid resistance of ≥65.



# MMA Solutions

Fast-curing, tough-wearing, and certified for durability, Prismo® offers a huge choice of MMA colours and finishes for road markings and coloured surfacing in high traffic areas.



Robur® combines Methyl Methacrylate resins with hardwearing aggregates and premium pigments to deliver exceptional durability and long-lasting colour retention. This two-component system cures quickly in various temperatures, and offers a range of application methods including screed, extrusion, roller, spray, and profiled.

Designed for high-wear areas such as roundabouts, box junctions, bike lanes, crossings and heavily trafficked roads, it delivers day and night visibility even in rainfall, high resistance over time, and reduced maintenance.



Assessed for durability by BAST and AETEC, Robur® provides a reliable, fast-curing solution that minimises traffic disruption and enhances road safety, even in demanding conditions.

With specialist formulas for warmer and cooler climates, it is available in an extensive range of vibrant colours and different finishes. From smooth flat lines, textured and anti-skid surfacing to agglomerate and profiled markings for enhanced wet night visibility and audible alerts.

# Paints & Primers

Versatile, quick drying and easy to apply, Prismo® offers a vast range of solvent and waterborne paints, primers and topcoats for line marking and coloured surfacing, with many grades certified for durability.



### Solventborne

High-quality acrylic, alkyd, and epoxy-based paints deliver excellent adhesion, durability, and long-lasting colour with quick drying times. Suitable for colder application conditions, our paints are offered with and without premixed glass beads and antiskid materials, and at different performance grades, to suit all specifications.

### Waterborne

Eco-friendly, high-performance paints with low VOC content and no harmful solvents. Fast drying and easy clean, they deliver intense colour and excellent durability. Available in numerous grades with or without premixed glass beads and antiskid. The range includes products for hot asphalt, and TT-P Type II paints certified for airfields.

### Indoor and outdoor flooring

Coatings and markings for warehouses, factories, and car parks.



# Bridge Joints

The original asphaltic plug bridge joint, introduced by Prismo® in the 1970's and trusted for its proven durability and flexibility. Designed to adapt with bridge movement, Thormajoint® is the industry benchmark for safety and long-lasting performance.

## THORMAJOINT®

- **Inventor** of the asphaltic plug joint system
- **Proven** over 50 years, in over 50 countries
- **Trusted** solution for bridge expansion

**Recycled  
tyres**  
in components  
boosts sustainability

Thormajoint® was the first asphaltic plug joint system created and maintains its leadership today with unmatched reliability and performance.

Blending seamlessly with the road surface, Thormajoint® accommodates movement across the entire bridge deck, including verges and hard shoulders, and acts as a waterproofing system, protecting bridge bearings.

Trusted in over 50 countries, Thormajoint® is a durable, quiet, and cost-effective alternative to mechanical joints.

### Benefits of Thormajoint®

- Lower cost compared to other bridge expansion joint systems
- Low levels of noise when trafficked
- Quick installation across carriageways
- Long service life
- Skid-resistant properties
- No anchoring system required
- Good resistance to wheel rutting
- Ability to accommodate longitudinal, rotational and transverse movements
- Suitable for all weather and climatic conditions, from arctic to tropical

A specialist process that can only be installed by certified professionals who are trained and approved by Prismo®



# Crack Repairs

Surface cracks and joints are weak spots that can develop into dangerous and costly hazards. Prismo® has a range of systems that offer a long-term and economical solution.

### Thormaseal™ 1401C

- Premium product
- Cracks: <5 mm to 40 mm
- Flexibility at low temperatures and flow resistance at higher temperatures
- Superior recovery properties
- High extension movement
- CE marked / Class N1

### Thormaseal™ Tropical AP

- Mid range product
- Cracks: <5 mm to 40 mm
- Suitable for hot, tropical climates
- Fully pumpable which reduces erosion in equipment

### Multiseal™ 40

- Premium product
- Cracks: <5 mm to 40 mm
- Supports extreme temperatures
- Remains flexible at low temperatures
- Normal to low extension movement
- CE marked / Class N2

### Prismo™

- Cost effective solution
- Cracks: <5 mm to 40 mm
- Suitable for temperate climate

### PFT Overbanding

- Rolls ready to use out of the box
- Cracks: <5 mm
- Simple application by propane torch
- High skid resistance: ≥60 SRT Initial and ≥50 SRT retained
- Up to 45% recycled material
- BBA HAPAS certified

### Single System Fill and Overband

A NEW durable, skid-resistant single-pour solution for cracks <5 mm to 40 mm. Offering efficient application and reliable performance, it can also be used for pothole repair. Contains up to 45% recycled material.

# Road Studs

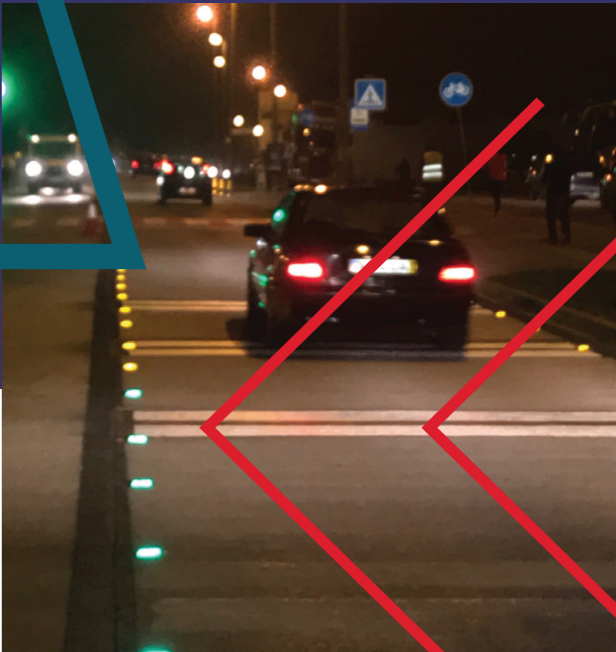
Road studs are a critical safety feature, providing visual guidance and audible warnings to drivers in dark or foggy conditions, and in adverse weather.

Prismo® is the exclusive distributor of Stimsonite® Road Studs across EMEA, a name synonymous with quality and innovation since 1964.

All-weather,  
year-round  
guidance that  
won't black out  
in rain, sleet, fog  
or falling snow

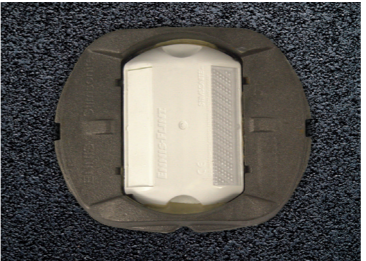
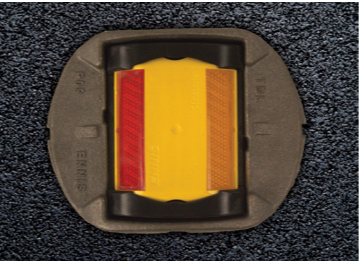
STIMSONITE®

CE UK  
CA  
CERTIFIED



### Surface Mounted (C80)

- Patented base ensures excellent adhesion to the road surface
- Injection moulded from durable polymers to endure heavy traffic
- Patented abrasion-resistant lens and advanced optics deliver superior retained reflectivity

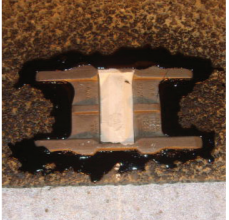


### Click Stud (381C)

- Cast iron housing for all climate conditions
- Easy fit reflector unit
- Rapid replacement of reflector at 'end-of-life'
- Reusable components

### Inset (381/C80)

- Cast iron housing for all climate conditions
- Ramp angles to protect against heavy trafficking
- Snow-ploughable for continual guidance in all types of weather



### Snow Ploughable (L101)

- Hardened cast iron housing to withstand the harshest conditions
- Specifically engineered to improve plough-ability and prevent reflector damage



### Bundy® Pads

- Exceptional adhesion
- Resists oil and weather
- Quick and easy to apply with a propane torch
- Up to 45% recycled material



### Grout Adhesive

- High strength bond
- Short cooling time
- High flexibility at low temperatures while keeping flow resistance

Lenses are available in white, yellow, red, green, blue, and orange to meet all regulatory requirements. The lenses can be housed in a wide range of polymer colours, bi-directional (two-way) or uni-directional (1 way) as required.

# Every mark matters with Prismo

Our team is here to help you find the right solution for your project. Whether you're enhancing road safety, creating vibrant public spaces, or improving infrastructure, we're ready to support you with expert guidance and reliable products. Get in touch today to discuss how Prismo® can support your project's needs.

## UK

Prismo Road Markings Limited  
+44 (0) 1257 225 100  
[info@prismoglobal.com](mailto:info@prismoglobal.com)

### Headquarters:

5 Drumhead Road,  
Chorley North Industrial Park,  
Chorley, Lancashire, PR6 7BX  
United Kingdom

## ITALY

Vernisol S.r.l.

### Codogno:

Via Sante Giuseppe Bertini 1  
Codogno (LO), 26845, Italy  
+39 0377 621250  
[vernisolinfo@prismoglobal.com](mailto:vernisolinfo@prismoglobal.com)

### Leini:

Via Beppe Fenoglio  
Leini (TO), 10040, Italy  
+39 0377 621270  
[vernisol torino@prismoglobal.com](mailto:vernisol torino@prismoglobal.com)

## SOUTH AFRICA

Prismo South Africa (PTY) Ltd  
+27 (0) 11 473 1057  
[RSAinfo@prismoglobal.com](mailto:RSAinfo@prismoglobal.com)

### Johannesburg:

Unit 7, Commercial Park,  
Aintree Avenue, Northriding,  
Randburg, Johannesburg, 2162

### Cape Town:

Unit 1 Fifth Street Park,  
6 Fifth Street, Montague Gardens,  
Milnerton, Cape Town 7441

[prismoglobal.com](http://prismoglobal.com)



The mark of enduring quality



Part of Prismo Global

\*Duraflect and Durabahn warranties: Supplier represents and warrants to the Buyer that, for the period specified, the product will perform to the classifications specified in the relevant Technical Data Sheet. Performance is subject to standard traffic conditions, correct application, and selection of drop-on medium, according to Prismo guidelines.

E&EO. Whilst every effort has been made to ensure accuracy, no liability is accepted for the consequences of any errors, omissions or misprints in this brochure. This document contains general information only and should not be construed as creating any warranties, express or implied. Images are for illustration purposes only. Products may be changed at any time and without prior notice. Prismo, Vernisol, and all product brand names are either registered trademarks or trademarks owned or authorised for use by Prismo Road Markings Limited. Copyright © 2024 Prismo Road Markings Limited. All rights reserved. APB1124.